

Avtech AVC series Security DVR Networking HowTo Guide

Unlike traditional CCTV recorders, all standalone Avtech AVC 7xx series security DVRs have networking capability. This feature is extremely useful because it allows the controlling of the DVR unit remotely. You will be able view live streaming video, control your PTZ security cameras and change the settings on the DVR, all without physically touching the DVR. This guide will show you how to network the security DVR behind a NAT router so that you can remotely monitor the streams captured by the security cameras you've installed.

A note on routers:

There are many companies that make routers. Although they all serve the same purpose, the user's interface for each router differs from brand to brand (even within the same brand, they can be different). Therefore, it is impossible for this guide to go through each and all of them. Please consult the user's manual for the details to configure your router. For the purpose of this guide, we will use LINKSYS WRT54GL in our examples.

Contents:

Step 1: [Setting up the physical connections](#)

Step 2: [Setting up the security DVR on the Local Area Network](#)

- [Accessing the DVR with supplied software](#)
- [Accessing the DVR with web browsers](#)

Step 3: [Setting up the Security DVR for Remote Access](#)

- [Switching to static IP address](#)
- [Determining the external IP address](#)
- [Port Forwarding](#)

Step 4: [Setting up DDNS](#)

Step 1: Setting up the physical connections

On all models of Avtech security DVRs, there is a LAN port socket at the back (labeled "LAN" Fig. 1). Using a CAT5 Ethernet RJ-45 cable (Fig. 3), connect this port to one of the Ethernet port socket at the back of the router (Fig. 2).

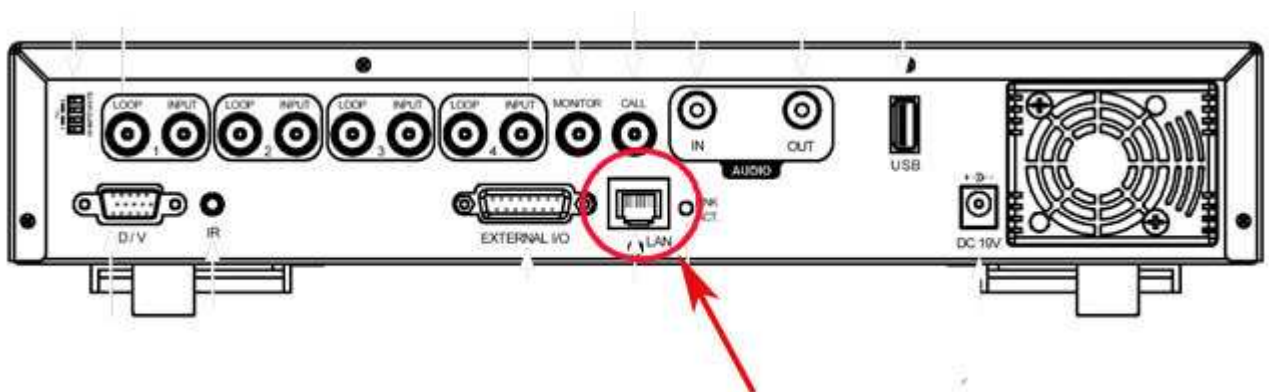


Fig. 1: LAN Port socket on Avtech AVC 760



Fig. 2: Ethernet port sockets on the back of Linksys WRT54GL



Fig. 3: CAT5 Ethernet RJ-45 cable

Once the DVR is connected to the router, and with both powered on, the Link/ACT LED (located next to the LAN port socket) on the DVR should lit up. The status light (in the front) on the router should also indicate that a device is connected and active. If both LINK/ACT LED and the status light on the router are NOT lit or blinking, there is something wrong with the connection, try replacing the cable.

Step 2: Setting up the DVR on your Local Area Network:

After the physical connection has been established, you can start tinkering with the settings. First you will need to check, and possibly change, the network settings of your security DVR. To do that you will need to access the DVR's OSD (on-screen-display). [Note: In order to view the OSD, make sure the DVR is connected to a TV or monitor.] Find and press the "menu" button right on the front panel of the security DVR. Menu options should now be available on your screen (Fig. 4):



Fig. 4: Avtech security DVR's OSD

Choose ADVANCE and then NETWORK to go into the network menu (Fig. 5). AT this point you should see 3 options:

1. Network Type
2. DNS
3. Port



Fig. 5: DVR's OSD - Network

Right now we will only be concerning with the first item on the list, "Network Type". There are 2 options for this, "DHCP" or "Static". For now, DHCP is what we are going to use. Before you make the selection please be sure the router is enabled to act as a DHCP server on your network (most routers have this option enabled as factory default).

To check if this option is enabled on the Linksys WRT54GL router, access the user interface of the router, then click on the "setup" tab, and then choose "basic setup". Under "Network Address Server Settings (DHCP)" you will see an option to either enable or disable "DHCP server". Make sure "Enable" is selected. If you changed the selection, make sure you click on "save settings" button at the bottom of the screen before you exit.

2a. Access the DVR using the supplied software.

After the DVR is set to DHCP, the router would then automatically assigns an IP address to the DVR. Finally, it is time to access the DVR from a computer. The computer needs to be on the same network, meaning that it has to be connected (wired or wirelessly) through the router. You will need to install the software that comes with the Avtech DVR. There should be 2 CDs that came with the security DVR. One includes all the user's manual and the other has the software. Place the software CD in your cdrom or dvdrom drive and then run the installation.



After the installation an icon labeled "Video server E" should now appear on your desktop . Double click on the icon to run the software. You should see the following (Fig. 6):



Fig. 6: Video Server E software

At this point we are not ready to log on to the DVR just yet. Since we set the router to automatically assign an IP to the DVR, we don't know the exact IP address, so we need to find that out. To do so we have to click on the



button with the magnifying glass. This is a search function to search for the security DVR's IP address on the network. After you click on the icon, a window should appear (Fig. 7).



The screenshot shows a window titled "Stop Search". It is divided into two main sections: "Device List" and "Detail Info".

The "Device List" section contains a table with the following headers: IP, MAC, PORT, DEVICE, and PRE USED. The table body is currently empty.

The "Detail Info" section contains several input fields and buttons:

- Server IP :
- Mac Address :
- Net Mask :
- Gateway :
- DNS Server :
- Web Port :

Buttons located on the right side of the "Detail Info" section are:

- SEARCH AGAIN
- APPLY
- OK
- RESET DEFAULT

Fig. 7: DVR's IP address search window.

The top portion of the window is labeled "Device List" and the bottom labeled "Detail Info". If the security DVR is properly connected, its assigned IP address should be showing up under the Device List. If it doesn't show up, press the "Search Again" button to restart a search. If it still doesn't show up then there might be a problem with the connection, or perhaps a firewall is blocking the software. To troubleshoot do the following:

1. Check the physical connection (cables).
2. Go into the router's user's interface to recheck the settings. Make sure DHCP is enabled. For many routers, there is a table that will list out the IP addresses of the DHCP devices that are recognized by the router. For a LINKSYS WRT54GL, the table is under STATUS > LAN, labeled "DHCP client" at the bottom of the page. Examine the list to make sure one of the devices is the DVR.
3. Lastly, make sure no firewall software is blocking the Video Server E program.

Ok, going back to search for the security DVR's IP address, once you see the IP address for the DVR listed under "Device list", write it down or remember it. Do the same for the port number. Now press the "OK" button to close the window. You should have now returned to the login window (Fig. 8). To login you need four pieces of information, they are from top to bottom: "Login", "Password", "IP address" and "Port #". On the previous step, we have obtained the IP address and the port #. Now, the default login and the password are "admin" and "admin". So enter these information and then press the green button to login.



Fig. 8: Login window.

It will take a few seconds to load, but after it loads, you should now have the videos from the security cameras on your computer screen. You have now succeeded in accessing the DVR on your local network (Fig. 8b).



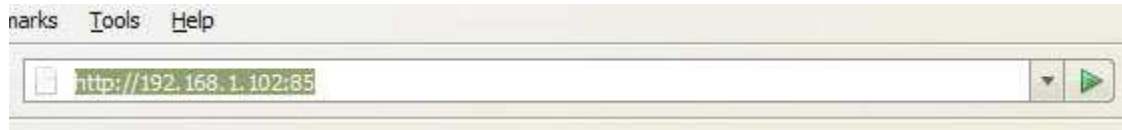
Fig. 8b: Accessing the security DVR with software

2b. Access the DVR using a web browser.

Another way to access the video stream from the DVR is with a java enabled web browser. However, comparing with the Video server E software, accessing the DVR using a web browser has many limitations. Video server E allows you to change the DVR's settings and configure its advance features, whereas using a browser only allows you to view the streaming video. Regardless, this is still very useful, because most computer already have a web browser installed.

To access the security DVR via the browser, simply type the IP address and the port # into the location bar. For example, if the IP address of my DVR is 192.168.1.102 and the port # is 85, then I will type the following in the location bar:

<http://192.168.1.102:85>



When you have entered the correct information you should now be accessing the following page (Fig. 9):



Fig. 9: DVR web browser login page.

Make sure your computer and browser is JAVA enabled.

Enter the login and password to log on (remember, the default login and password is "admin" and "admin"). After a few seconds of loading you should be able to see the videos from your security camera(s) in the browser (Fig 9b).

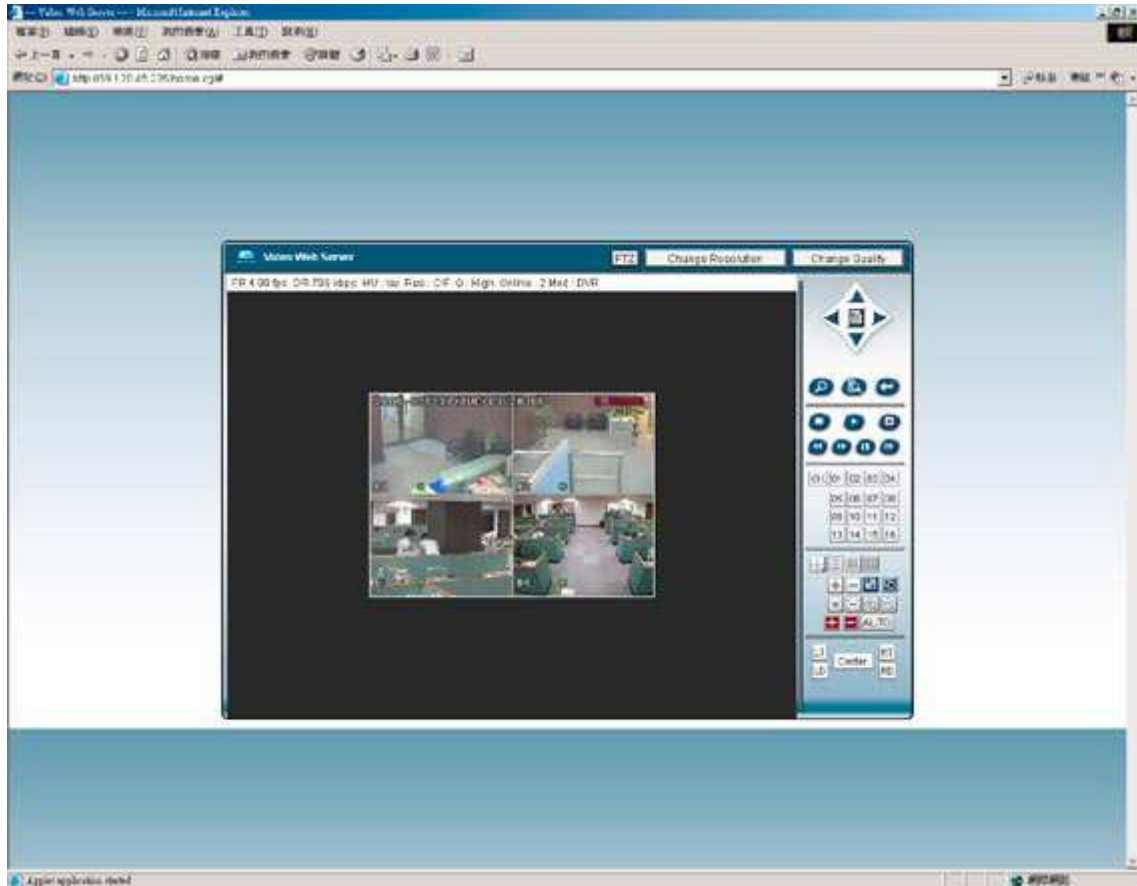


Fig. 9b: Accessing the DVR with a web browser (video can be enlarged).

Step 3: Setup remote surveillance for the DVR

3a. Switching to a static IP

When we are talking about a “remote location”, what we are saying is somewhere outside of your local network. For example, you have setup a video surveillance system at home and now you want to monitor what the security camera(s) are capturing on a different network from work. This of course is possible; however, you do need to have broadband connections at both locations.

To begin the setup, I strongly recommend that you now switch from DHCP to STATIC IP address on your security DVR. This is not necessary, but it does help make things more organized. To switch to static IP, you do so by one of two ways, 1) Configure by using the Video Server E software 2) Configure through the DVR’s OSD. I would recommend that you use method 1, since it is much simpler; instead of small buttons on the DVR, you have a keyboard to input all the information. Here is how to do it with this method:

Login to your DVR using Video Server E (as described in the previous section). Once you have login, click on the



“system config” button, the icon looks like a pencil on a stick-it note . A window should now pop up, which looks like this (Fig. 10):

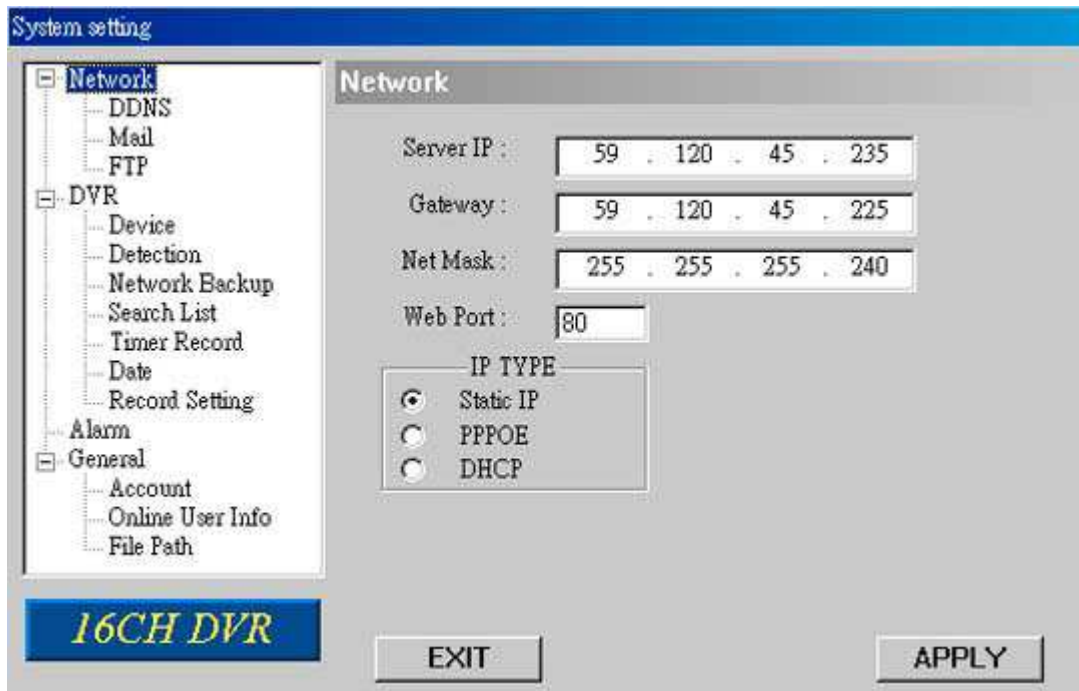


Fig. 10: DVR advance system settings window.

Select "Network" on the left hand side. Once you do that, you should be able to input "Server IP", "Gateway", "subnet mask" and "web port" on the right pane.

1. **Server IP**, is the IP address of the DVR. You can choose to use the same IP address that is given to the DVR by the router, or just pick a new one. If you pick a new one, make sure the IP address is recognizable by the router, or else the DVR will no longer be recognized on the network. One way to pick an IP address is to look at existing devices on the network. Let's say you have 2 computers on the network. You look at their IP addresses; if they are 192.168.1.101 and 192.168.1.102, then perhaps you can choose 192.168.1.103 (just make sure no other device on the network has the same IP address). To be safe, you can pick an IP with a larger 4th number, such as, 192.168.1.111.
2. **Gateway** is the IP address of your router. So let me ask you, what IP address do you use to access the router? The default for LINKSYS WRT54GL is 192.168.1.1. If you are not sure, check with the user's manual of the router to find this information.
3. **Subnet mask**, usually is 255.255.255.0
4. **Web port** (1~9999), pick one that is not used by any other devices. I generally like to pick a larger #, there will be a lesser chance of a conflict.

After you have entered the information, choose "static IP" at the bottom. Then click on the APPLY button. Your security DVR unit is now set with a static IP address.

3b. Determining the external IP address given to you by your ISP

You might ask: Another IP address?

OK, if you are not familiar with networking, this might be a bit confusing, so let me try to clarify things. In all the previous sections, the DVR's IP address we had talked about is a local IP address. What does that mean? Let me use a completely different subject to explain this. Imagine a phone system used in an office. Each phone unit has an extension #. So perhaps John's extension is 101, Mary's is 204, Richard's is 250, and so on. Within the office, John can call Mary simply by dialing 204. Personnel don't need anything else other than an extension # in order to call each other within the office. A local IP address is somewhat similar to an extension #. The local IP address specifies the location of a device within a local area network. When you are within the same network, you can communicate with a device by specifying its local IP address. Going back to the phone example, if John is taking a day off thus relaxing at home, he can't call Mary at the office simply by dialing the 204 extension on his home

phone. To reach Mary at the office, he needs to first dial the office's phone #. If you are outside of the phone system, you will have to first find a way to reach the system. This is the same for our networking example. To access a remote network you will need to have its **external IP** address. However, unlike the difference between a 10 digit phone # and a 3 digit extension #, the difference between local and external IPs are not as clear cut. Both share the same format, therefore can cause some confusion. When you want to setup your security DVR system to access remotely, you need to know both the local and external IP address.

There are several ways to find your external address:

1. Call your ISP (internet service provider) and ask them for it.
2. Check the status page of your router.
3. Or go to websites such as <http://whatismyip.com/>

If you have an active internet connection, the 3rd method is probably the easiest.

3c. Setting up Port Forwarding

OK, if you have followed everything mentioned in this guide so far, you should at least have the following:

1. Local IP address for your security DVR.
2. Port # for your security DVR.
3. External IP address for your network.

Going back to the phone system example in the previous section, if you are at home and you want to call someone at the office, you will need to dial a phone # plus an extension #. However for networking, you will need to specify the external IP address but NOT the local IP address. Instead, you will have to forward a port to the local IP address. To do so, there is one extra setup step. I know we have already done plenty of setting-up and you probably just want to finish with it; unfortunately, this is necessary, I'll explain why:

Assuming that these are my IP addresses and the port #:

1. Local IP address for the DVR: 111.111.1.111
2. Port #: 5555
3. External IP: 22.222.22.22

If I want to access the security DVR remotely with a Java enabled browser, this is what I will need to type into the location bar:

`http://22.222.22.22:5555`

As you have notice, no information on the local IP address was specified. When I press ENTER, a request will travel through the web trying to reach the 22.222.22.22 IP address. Eventually, it will find the network. However, when the request have reached the router it will no longer go any further. Why? Because the router does not know how to handle this request. The router knows that the request is for port 5555, but does not know where this port 5555 is going. In all of the previous sections, we had never done anything to allow the router to know that port 5555 should be associated with local IP address 111.111.1.111. So in order for remote access, we have to configure the router so that it knows where to forward that port. This step is called "Port Forwarding".

Port forwarding is a feature of the router, therefore routers of different models and brands have different interfaces for setting up this feature. I won't be able to go through each and all of them here. Fortunately there is a website dedicated to help people setting up port forwarding:

http://www.portforward.com/english/routers/port_forwarding/routerindex.htm

The site has a list of routers. Look for the brand of your router and then click on the specific model. You will then see a list of applications; Avtech's security DVRs are not on the list. However, setting up port forwarding is similar for most applications. We'll use the instructions for "ABC" software that is on the list (Fig. 11).



Fig. 11: Portforward.com ABC software.

For LINKSYS WRT54GL router the page would be:

http://www.portforward.com/english/routers/port_forwarding/Linksys/WRT54GL/ABC.htm

Since we are not actually using the ABC program, ignore the top part. Start from the part where is ask for "ABC's Port for incoming connections", enter the port # that you have specify for your DVR (Fig. 12). Then enter the local ip address for the DVR when it ask for you to "Please enter the static ip you want to forward to:" (Fig. 13). Follow the rest of the instructions on the page. (Note: "ABC1" is just a label, it is used for keeping track of all the applications and devices that are utilizing the port forwarding feature of your router. Since you are setting up for a DVR, you can just label it "DVR")



In the menu on the left hand side of your screen, click the **Network** link. On this page you should see a **Port** box. You can change the port number that ABC is using if you like. The number that is in that Port box is the port that you will have to forward.

Please enter the number that was in that box below.

ABC's Port for incoming connections

Fig. 12: Enter port # for DVR.

Do not skip this step!

Please enter the static ip you want to forward to:

192.168.1.

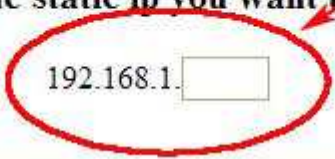


Fig. 13: Enter static IP Address for you security DVR.

After you have finished configuring port-forwarding, you are ready to access the DVR remotely through the internet. To do that in the web browser, type your external IP address and the port #, with a colon between the two, such as this:

http://xxx.xxx.xxx.xxx:port#

Enter your login information and you will be able to access the video streams from your security camera(s). I had experience in which the router failed to forward the port right away after the setup, so if it doesn't work, wait a little bit and try again.

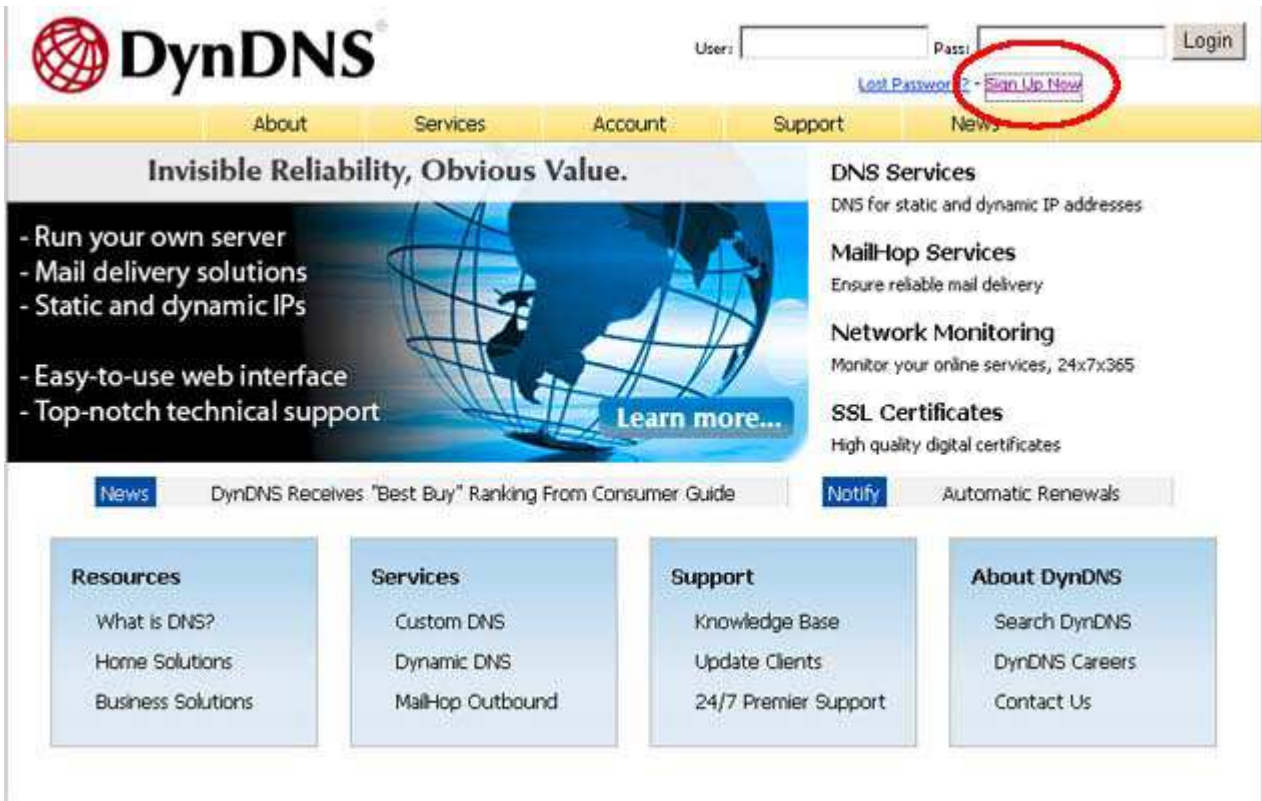
Step 4: Setting up DDNS

There is still one more thing that might or might not affect you. Most ISPs issue external ip addresses that are dynamic, meaning that the ip address could change over time. This is a problem because in order to access the security DVR remotely, you need to know the external IP address of the network where it is installed. It would be troublesome if it kept changing. Luckily there are free services that will keep track of the changes for you. Basically this is what you need to do:

1. Sign up a free account with one of the service such as dyndns.com.
2. Pick a host name while signing up.
3. Setup the DDNS feature on the device/application that will communicate with their server (in our case, the router).

The "network setup manual" that comes with the AVC series DVRs has a section that covers the steps to sign up a DDNS account with www.dyndns.com, I will present that section here (Pg. 2-7):

1. Go to <http://www.dyndns.com> and sign up a DDNS account.



DynDNS

User: Pass:

[Lost Password?](#) - [Sign Up Now](#)

[About](#) [Services](#) [Account](#) [Support](#) [News](#)

Invisible Reliability, Obvious Value.

- Run your own server
- Mail delivery solutions
- Static and dynamic IPs
- Easy-to-use web interface
- Top-notch technical support

[Learn more...](#)

DNS Services
DNS for static and dynamic IP addresses

MailHop Services
Ensure reliable mail delivery

Network Monitoring
Monitor your online services, 24x7x365

SSL Certificates
High quality digital certificates

News DynDNS Receives "Best Buy" Ranking From Consumer Guide

Notify Automatic Renewals

Resources

- What is DNS?
- Home Solutions
- Business Solutions

Services

- Custom DNS
- Dynamic DNS
- MailHop Outbound

Support

- Knowledge Base
- Update Clients
- 24/7 Premier Support

About DynDNS

- Search DynDNS
- DynDNS Careers
- Contact Us

2. Enter all the information necessary for signing up an account according to the website instructions.

DynDNS - Account - Create Account - Microsoft Internet Explorer


檔案(F) 編輯(E) 檢視(V) 我的最愛(A) 工具(T) 說明(H)

網址(1) <https://www.dyndns.com/account/create.html>

Google - Search - 33 blocked - Check - AutoLink - AutoFill - Options

Y! - 搜尋 - 登入 - 網頁翻譯 - 信箱 - 拍賣 - 交友 - 生活

DynDNS - Account - Create Ac... + 新增分頁

 **DynDNS**

User: Pass:
[Lost Password?](#) - [Sign Up Now](#)

About Services Account Support News

My Account

- Create Account
- Login
- Lost Password?

Search DynDNS

Create Account

Please complete the form below to create your account. You will receive an e-mail containing instructions to activate your account. If you do not follow these directions within 48 hours, you will need to recreate your account.

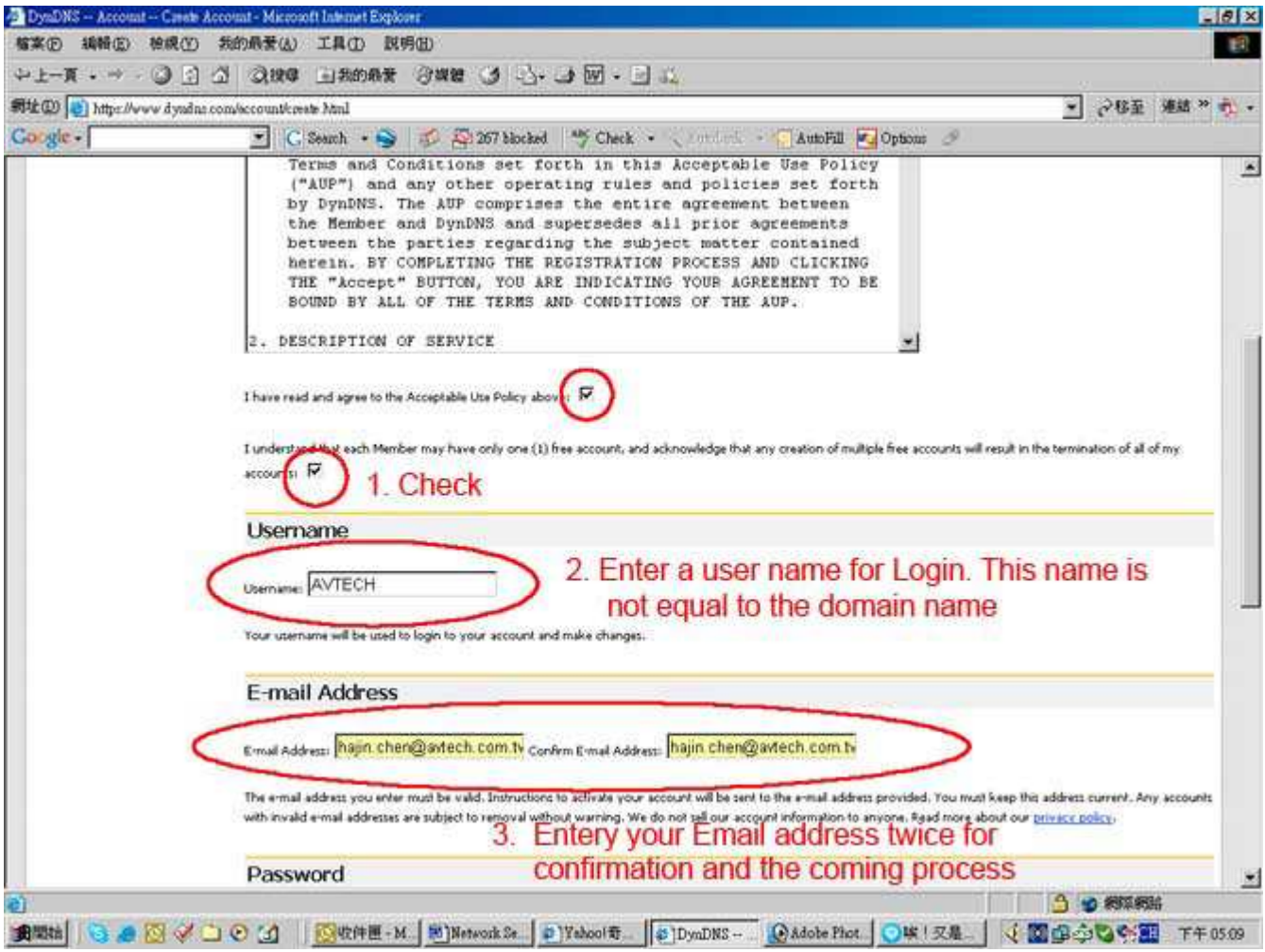
Acceptable Use Policy

Policy Last Modified: February 6, 2006

1. ACKNOWLEDGMENT AND ACCEPTANCE OF TERMS OF SERVICE

All services provided by Dynamic Network Services, Inc. ("DynDNS") are provided to you (the "Member") under the Terms and Conditions set forth in this Acceptable Use Policy ("AUP") and any other operating rules and policies set forth by DynDNS. The AUP comprises the entire agreement between the Member and DynDNS and supersedes all prior agreements between the parties regarding the subject matter contained herein. BY COMPLETING THE REGISTRATION PROCESS AND CLICKING THE "Accept" BUTTON, YOU ARE INDICATING YOUR AGREEMENT TO BE BOUND BY ALL OF THE TERMS AND CONDITIONS OF THE AUP.
2. DESCRIPTION OF SERVICE

美國 收件... Netwo... Adob... AYC7... Netwo... 未命... Yaho... AYC7... DynD... 下午 05:42



Terms and Conditions set forth in this Acceptable Use Policy ("AUP") and any other operating rules and policies set forth by DynDNS. The AUP comprises the entire agreement between the Member and DynDNS and supersedes all prior agreements between the parties regarding the subject matter contained herein. BY COMPLETING THE REGISTRATION PROCESS AND CLICKING THE "Accept" BUTTON, YOU ARE INDICATING YOUR AGREEMENT TO BE BOUND BY ALL OF THE TERMS AND CONDITIONS OF THE AUP.

2. DESCRIPTION OF SERVICE

I have read and agree to the Acceptable Use Policy above:

I understand that each Member may have only one (1) free account, and acknowledge that any creation of multiple free accounts will result in the termination of all of my accounts.

1. Check

Username

Username:

2. Enter a user name for Login. This name is not equal to the domain name

Your username will be used to login to your account and make changes.

E-mail Address

E-mail Address: Confirm E-mail Address:

3. Enter your Email address twice for confirmation and the coming process

The e-mail address you enter must be valid. Instructions to activate your account will be sent to the e-mail address provided. You must keep this address current. Any accounts with invalid e-mail addresses are subject to removal without warning. We do not sell our account information to anyone. Read more about our [privacy policy](#).

Password

Password

4. Create a password

Password: Confirm Password:

The password you enter will be used to access your account. It must be more than 5 characters and cannot be the same as your username. Do not choose a password that is a common word, or can otherwise be easily guessed.

Mailing Lists

DynDNS maintains a number of mailing lists designed to keep our users informed about product announcements, client development, our company newsletter, and our system status. Please use the checkboxes below to alter your subscription preference. Your subscription preference may be changed at any time through the [account settings](#) page.

Mailing List	Subscribe
Announce	<input type="checkbox"/>
MallHop	<input type="checkbox"/>
system-status	<input type="checkbox"/>

Optional Information

How did you hear about us: Details:

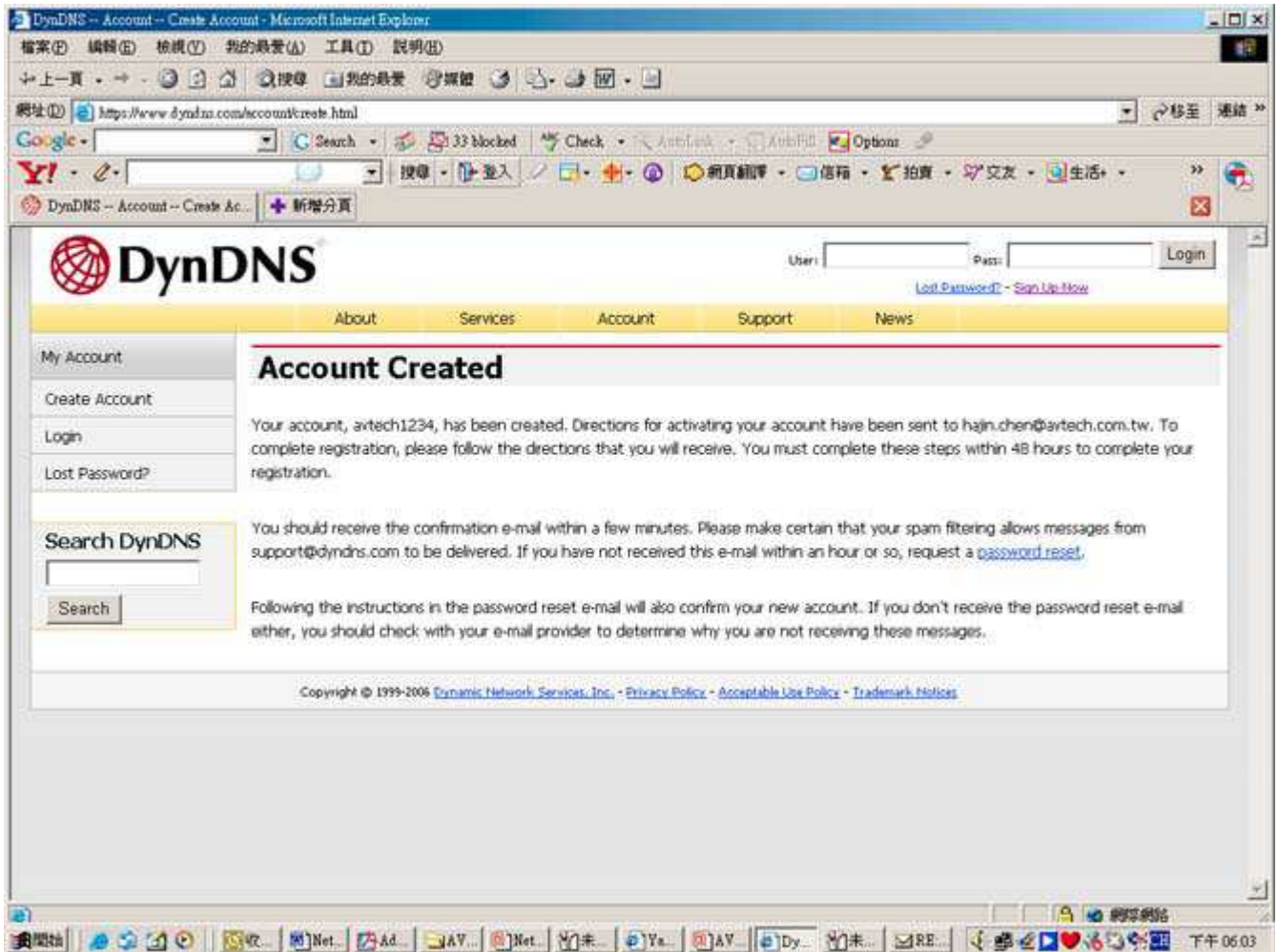
Providing this information will help us to better understand our customers, and tailor future offerings more accurately to your needs. Thanks

for your help!

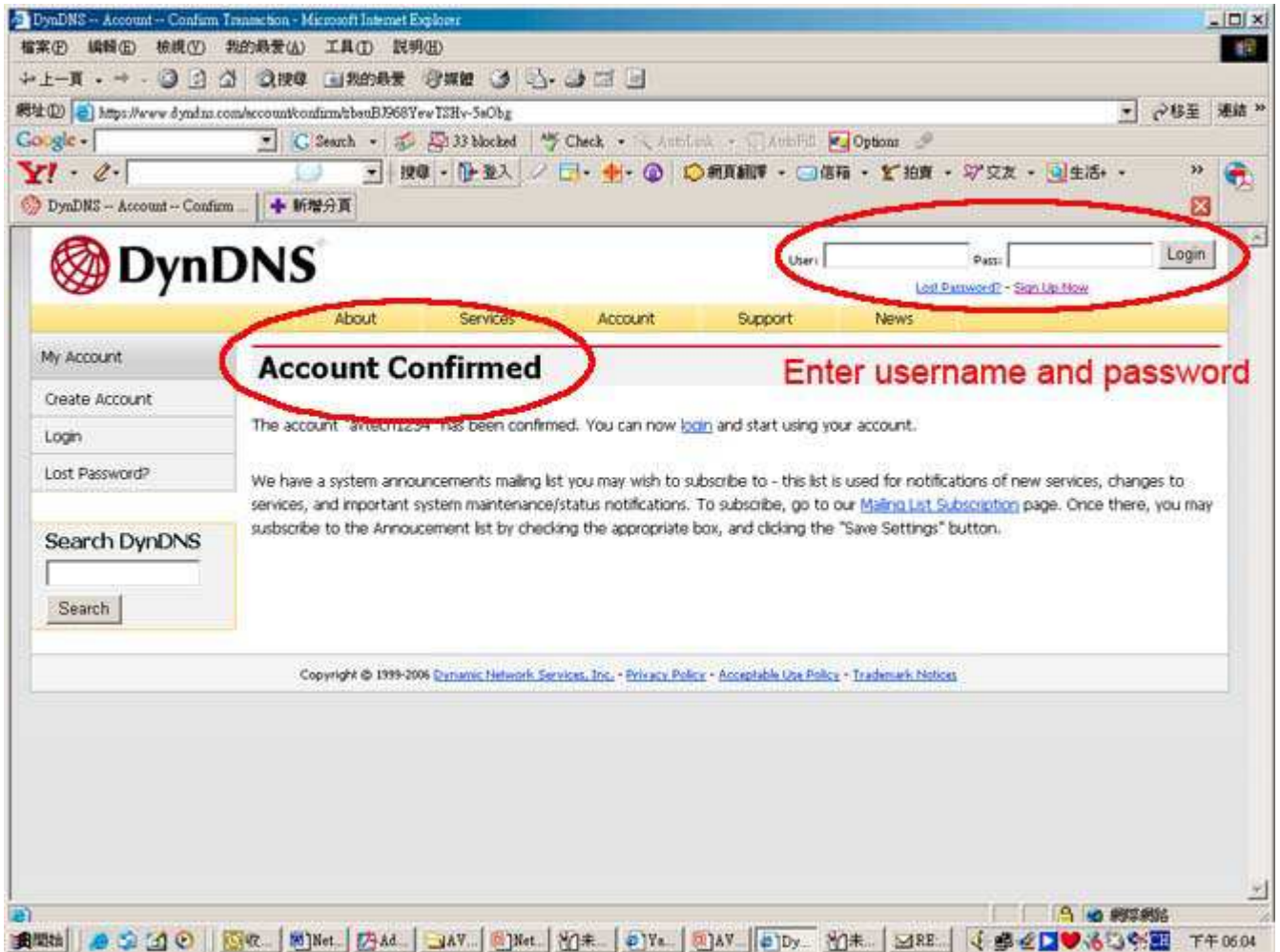
5. Click on the button to create the account

Create Account

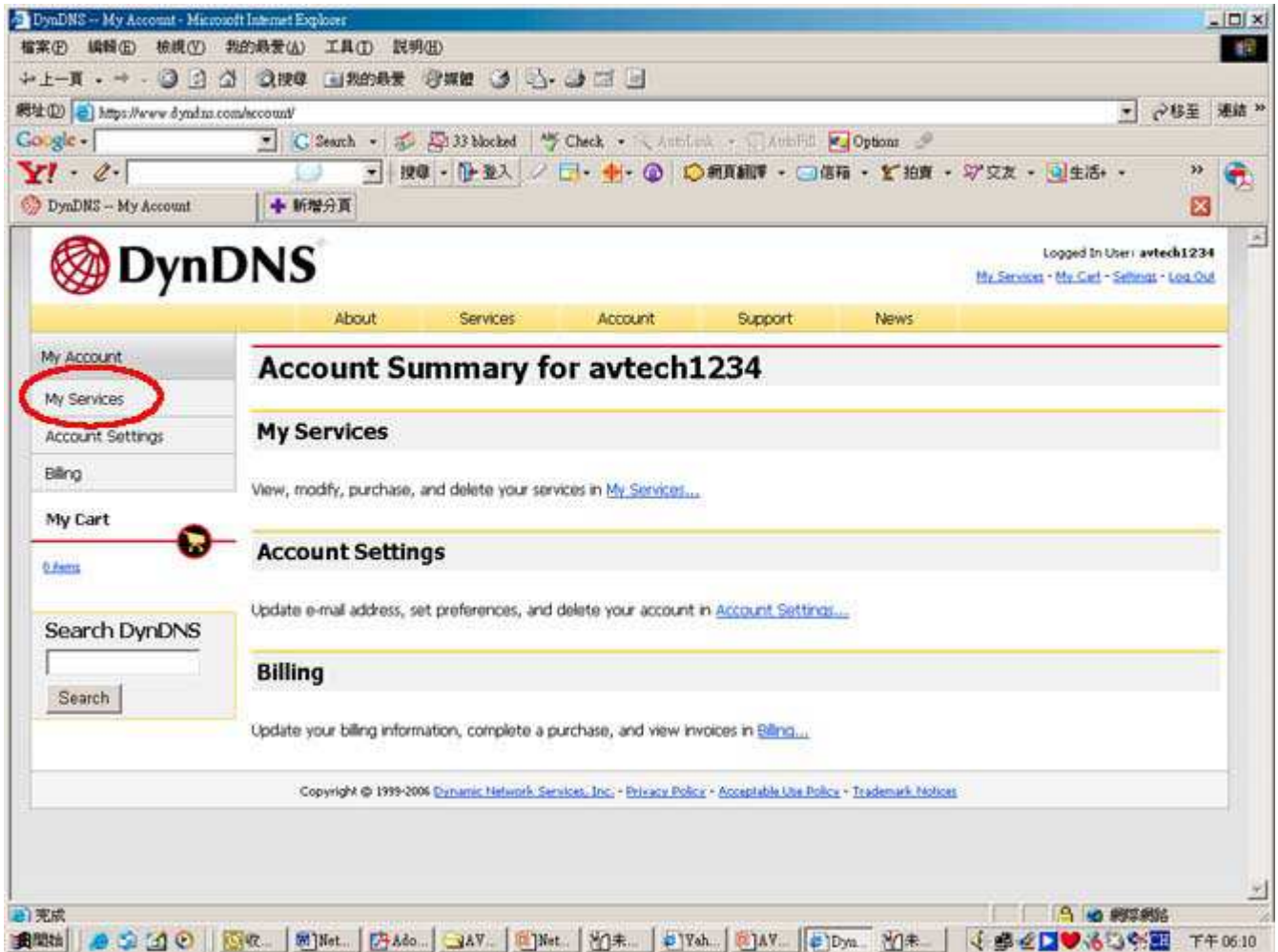
3. Then, you will see the screen "Account Created", and DynDNS will email the instructions to your specified E-mail address for enabling your account. Please get this mail within 48 hours and complete the procedure for enabling your account according to the instructions in the mail.



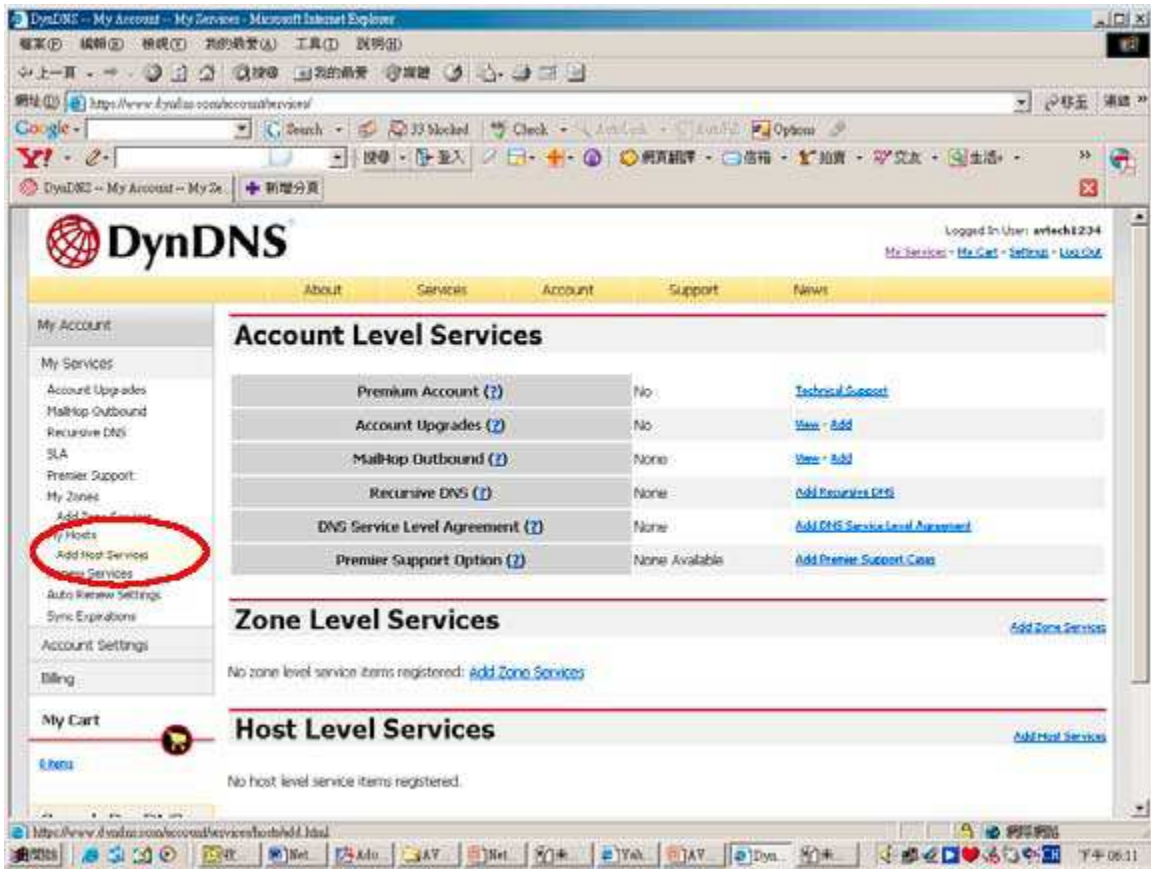
4. Press the link in the mail and you will see "Account Confirmed". Your account is created successfully now. Log in with your account information.



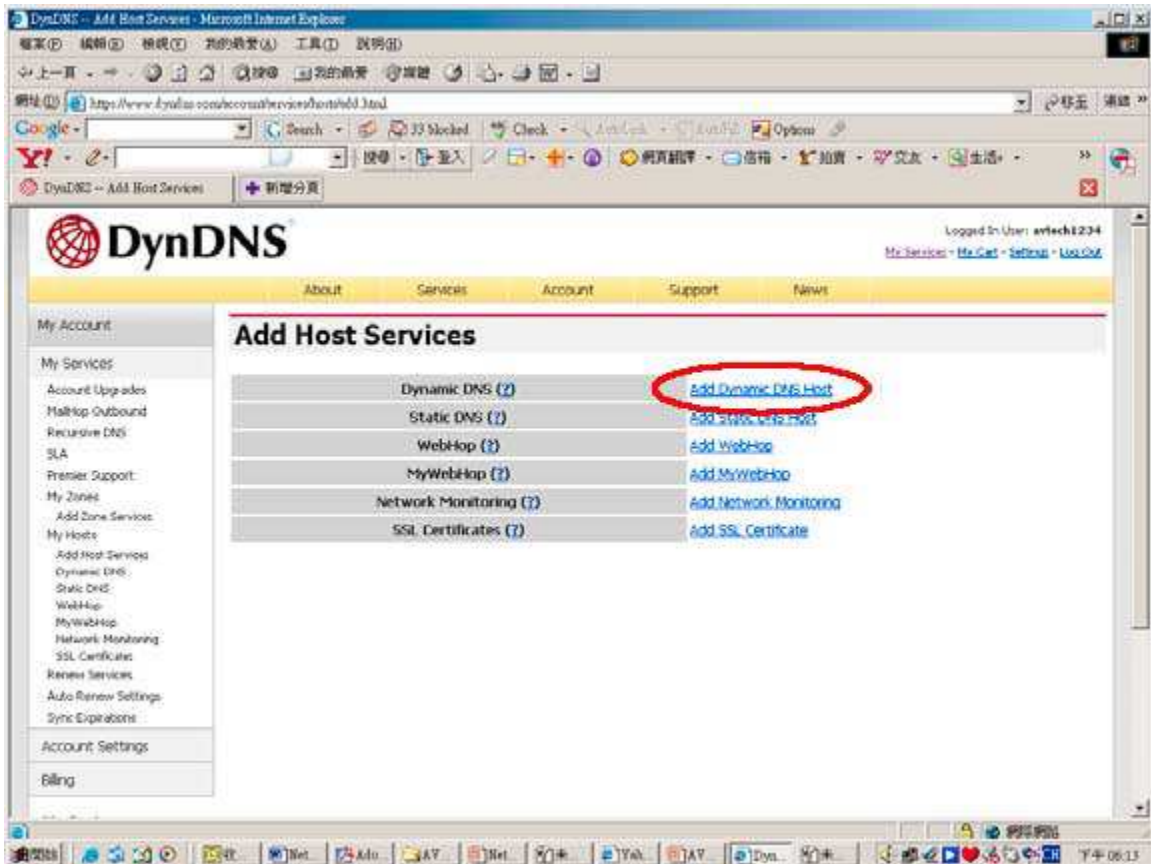
5. Click "My Service".



6. Click "Add Host Services".



7. Click "Add Dynamic DNS Host".



8. Fill in and choose the desired host name.

New Dynamic DNSSM Host 1. choose a Hostname

Hostname:	<input type="text" value="yourname"/>	<input type="text" value="mine.nu"/>
IP Address:	<input type="text" value="211.75.84.96"/>	
Enable Wildcard:	<input type="checkbox"/>	
Mail Exchanger (optional):	<input type="text"/>	<input type="checkbox"/> Backup MX?

2. click to add host

9. The host name is created. You will be connected to the corresponding IP address whenever you enter this hostname.

Hostname Created

[Dynamic DNS Home](#)

The hostname you have requested has been created. The information now in the database and DNS system is:

Hostname:	you@name.mine.ru
IP Address:	211.75.84.96
Wildcard:	N
Mail Exchanger:	None
Backup MX:	N

After creating the account and choosing a host name, you will need to enter the account information in the router.

(A side note: The Avtech security DVRs also have the DDNS feature, however, in our setup the router is the device that is keeping track of your external IP address, and therefore we need to use the DDNS function on the router. If we use the DVR's DDNS function, it will only update the server with your local IP address, that won't be useful at all.)

To setup the router, basically find the DDNS page in the router's web interface and fill in your account username, password and hostname. Please consult with your router's user's manual to find the DDNS page for your router.

For LINKSYS WRT54GL, the DDNS tab is under the setup tab.

After you have finished with all the steps, you can now access the DVR by using:

`http://hostname:port#`

There you have it, by following this guide you should have successfully configured your Avtech security DVR for remote access. You will now be able to watch live video from your security camera(s), control the PTZ security camera(s), download recordings, and change the DVR's settings.